

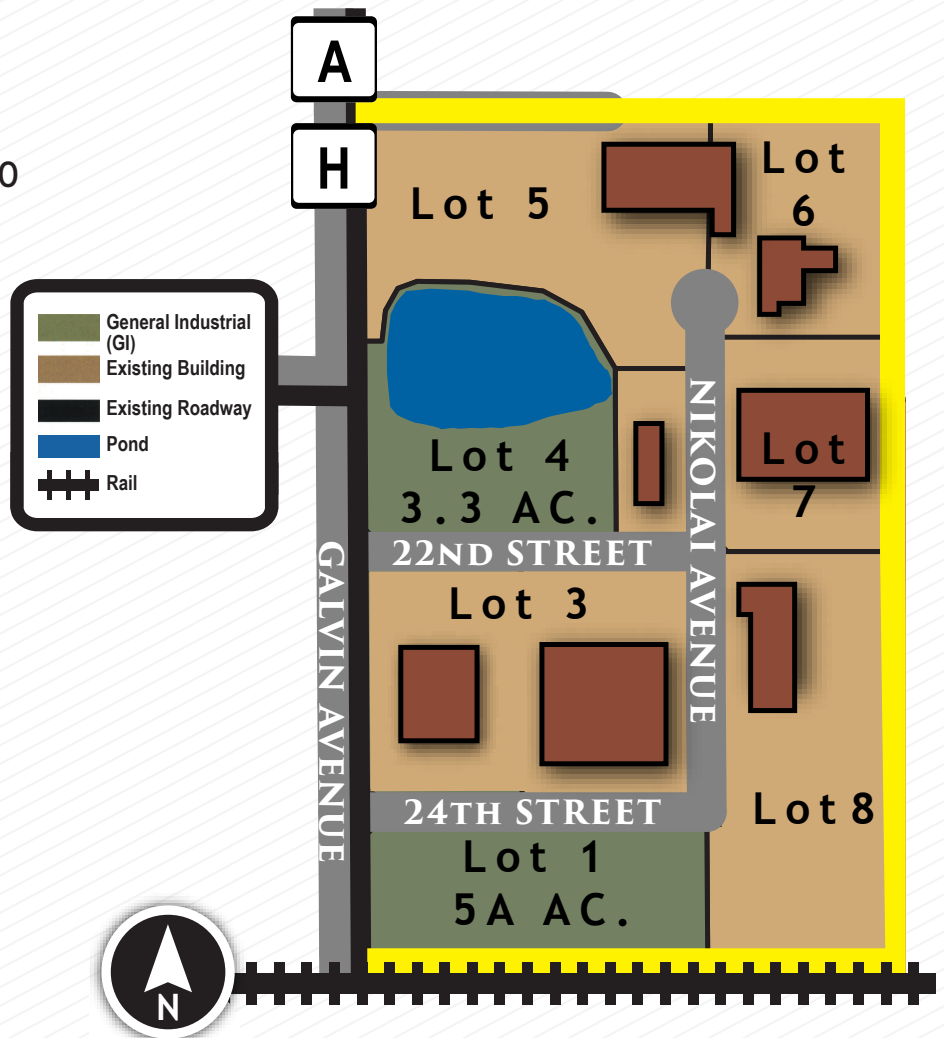
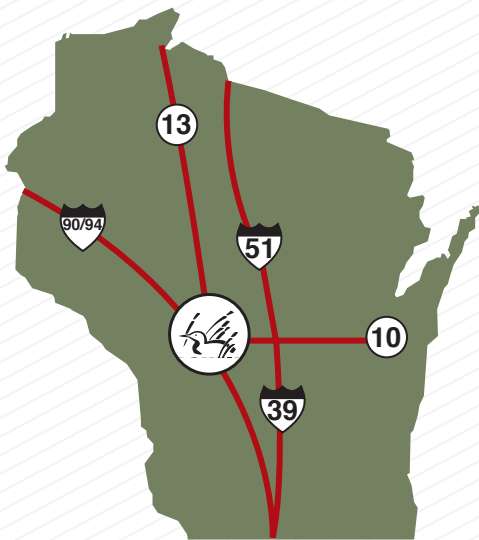
NORWOOD

INDUSTRIAL PARK

This 60-acre, privately owned Industrial Park is located on Marshfield's East side, less than one mile from the four-lane US HWY 10. The asphalt paved streets are set up with mountable curb and gutter. All city utilities are available. The park features a convenient horseshoe layout for easy access by semi truck traffic.

GENERAL INFORMATION

- 60-acres, privately owned
- Rail availability
- Easy access to four-lane HWY 10



CONTACTS