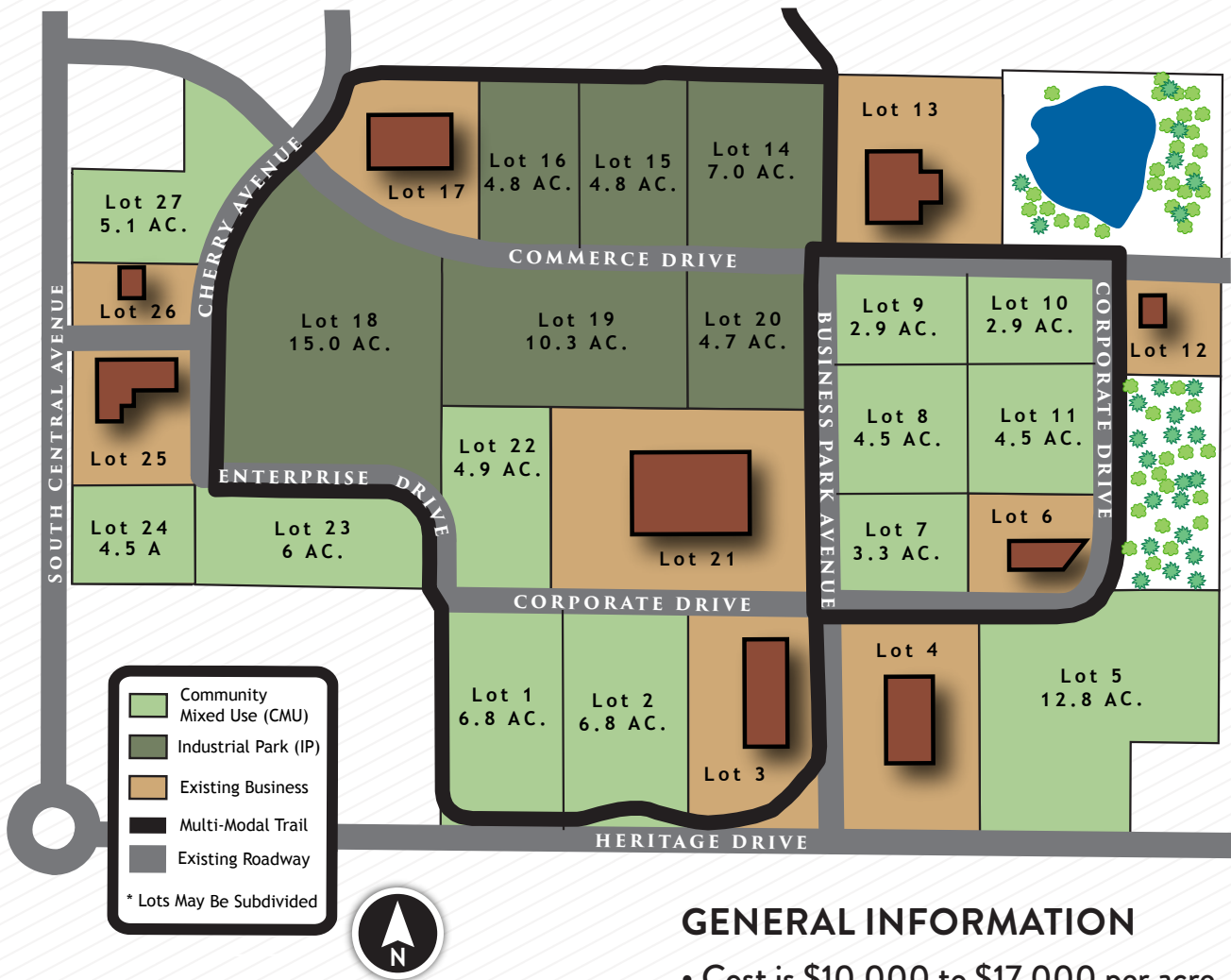


MILL CREEK

BUSINESS PARK

Located on Marshfield's Southeast side—Mill Creek Business Park offers close proximity to the municipal airport and is less than 1/4 mile to the four-lane US HWY 10. An impressive multi-modal trail meanders through the park. The lots shown below may be subdivided to fit your needs. Fiber-optic Internet is also available.



GENERAL INFORMATION

- Cost is \$10,000 to \$17,000 per acre
- Multi-modal trail within business park
- Close proximity to 4-lane HWY 10
- Fiber-optic internet available

CONTACTS